



SPONSORS

Make a Difference!

Thank you,

United Way

of Benton-Franklin Counties

Communication with Our Parent Partners



Presenter : Bonnie Wickler

Retired Preschool Coordinator
from Richland School District

Please Join Us!
FREE training and STARS hours
No Pre-registration Needed

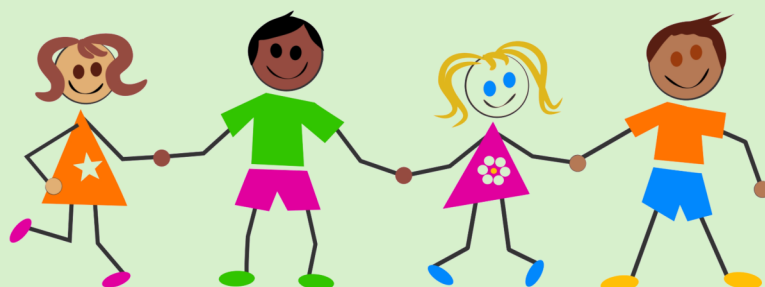
September 15, 2016

Richland High School Library
930 Long Ave, Richland

6:30-8:30 pm

When it comes to delivering good and “not so good” messages, a positive relationship with parents is crucial. *How do we build relationships so that difficult subjects become easier to discuss? What are some communication tips for these conversations?*

As a retired special educator, Bonnie has had a wealth of experience discussing sensitive issues with parents of young children. She will offer you guidance on how to be sensitive yet direct when discussing behavioral or developmental issues with families.



If you'd like more information, please contact Karen Weakley, PFEL President, 509.430.6358